



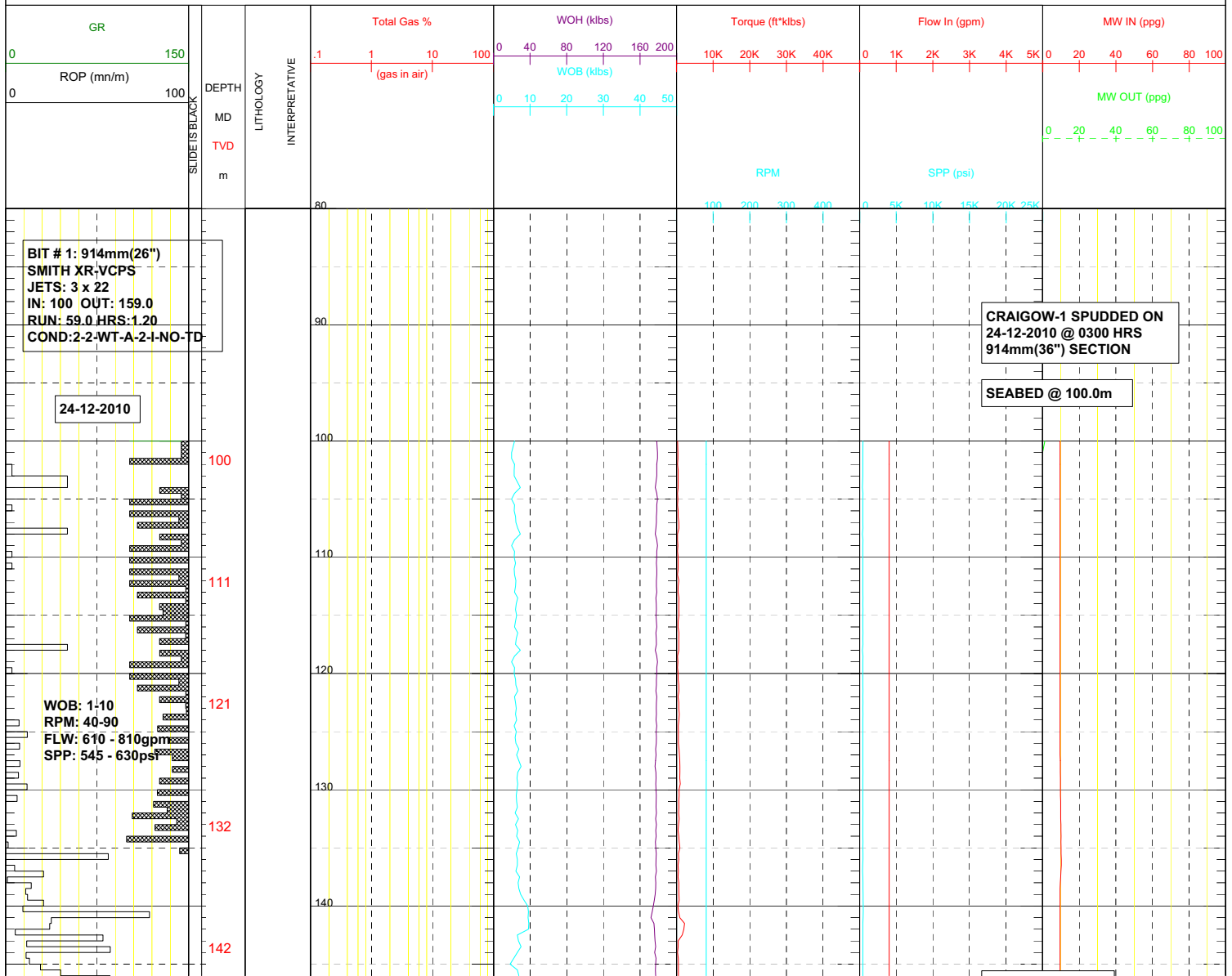
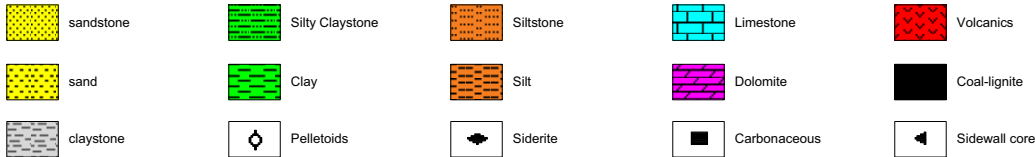
DRILLING LOG

CRAIGOW 1



FROM : (m) 80 TO : (m) 1810 SCALE : 1/ 500

Client: TAP OIL Field : CRAIGOW Rig Name : KAN TAN IV RT-ELEV (m) : 26 Final TD (m) : 1800.00
Well : CRAIGOW 1 Country : AUSTRALIA Rig Type : SEMI SUB MSL-RT (m) : 74 Final TVD (m): 1799.92



BIT # 2: 445mm(17.5")
SMITH MILL TOOTH
JETS: 3 x 13, 3 x 16
IN: 159.0 OUT: 145.5
RUN: 586 HRS: 11.14
COND: 2-2-WT-A-E-I-CT-472

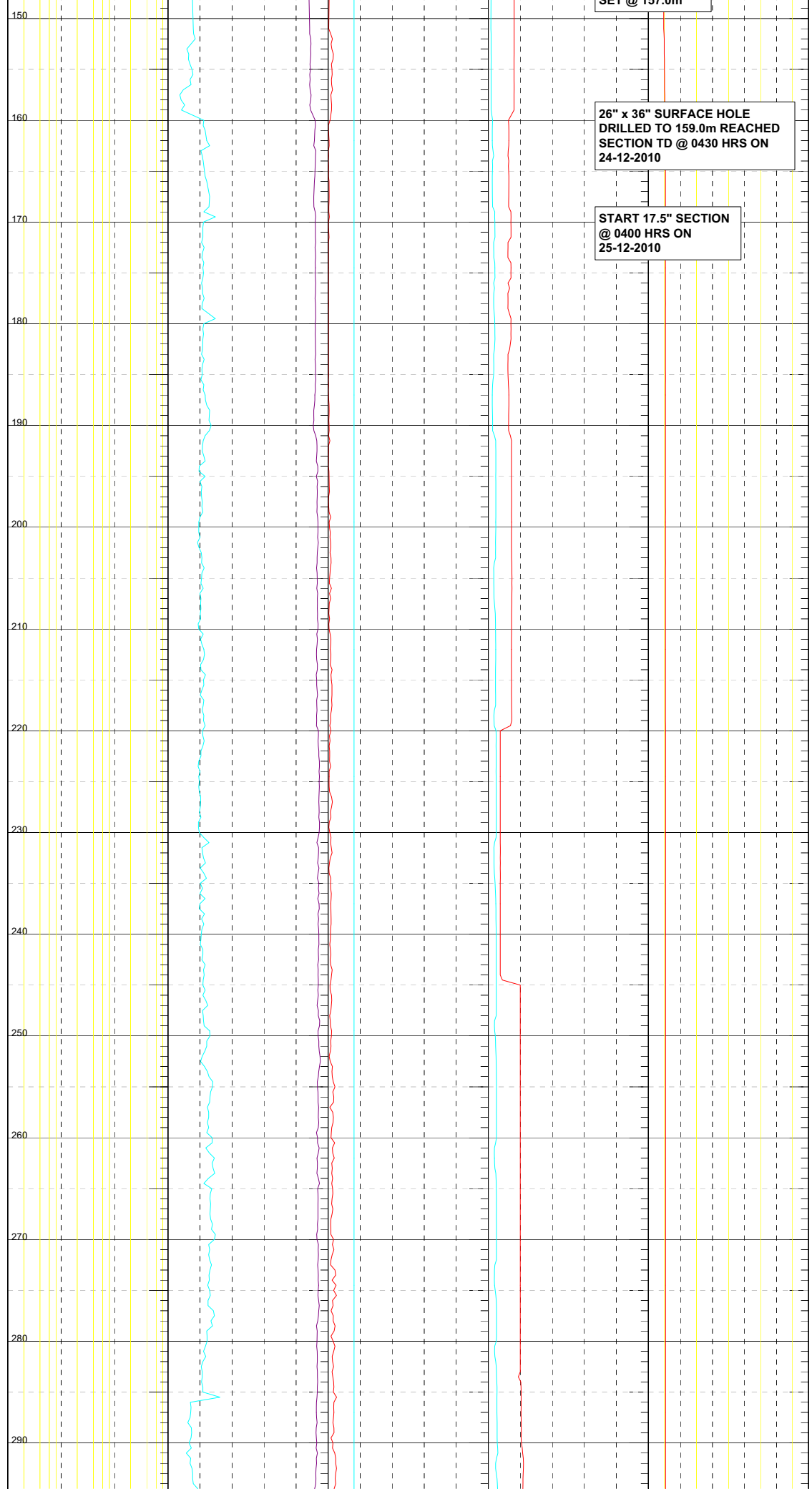
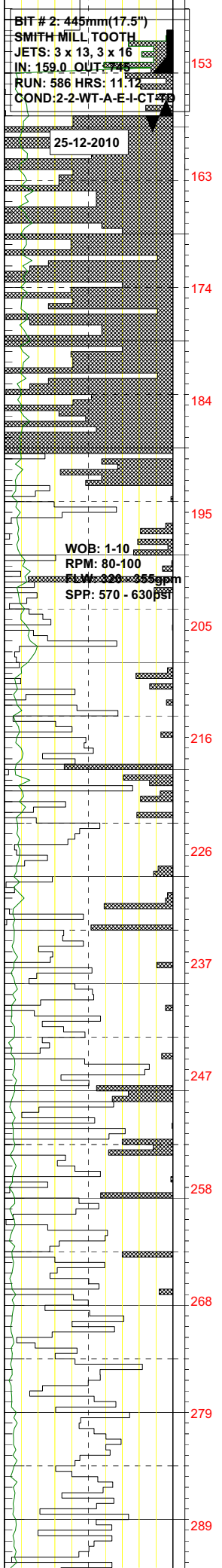
25-12-2010

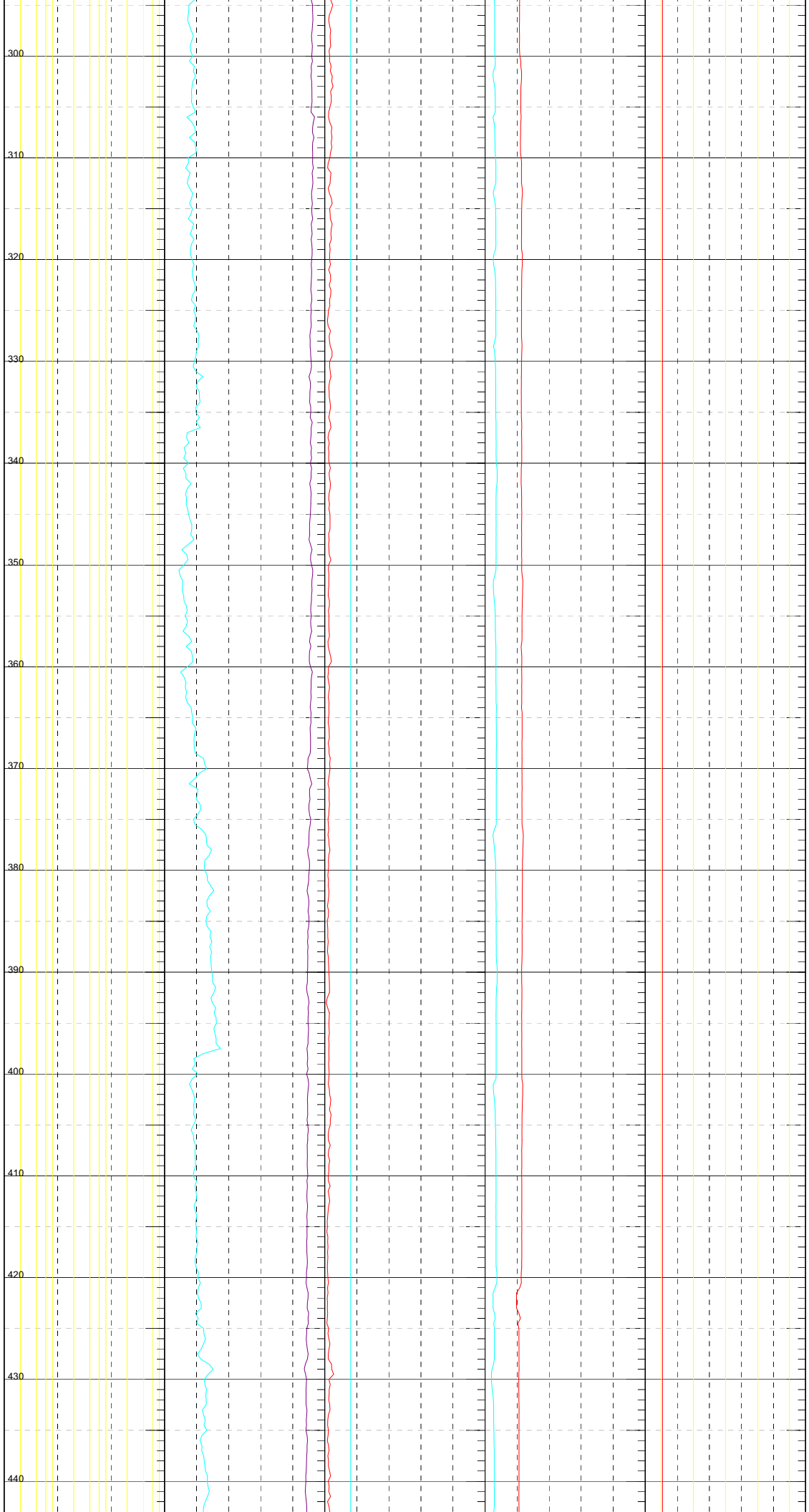
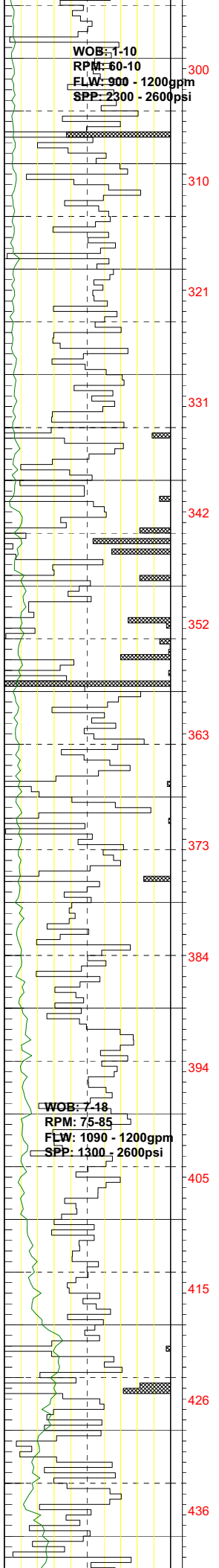
WOB: 1-10
RPM: 80-100
Ft/W: 320 - 355 gpm
SPP: 570 - 630 PSI

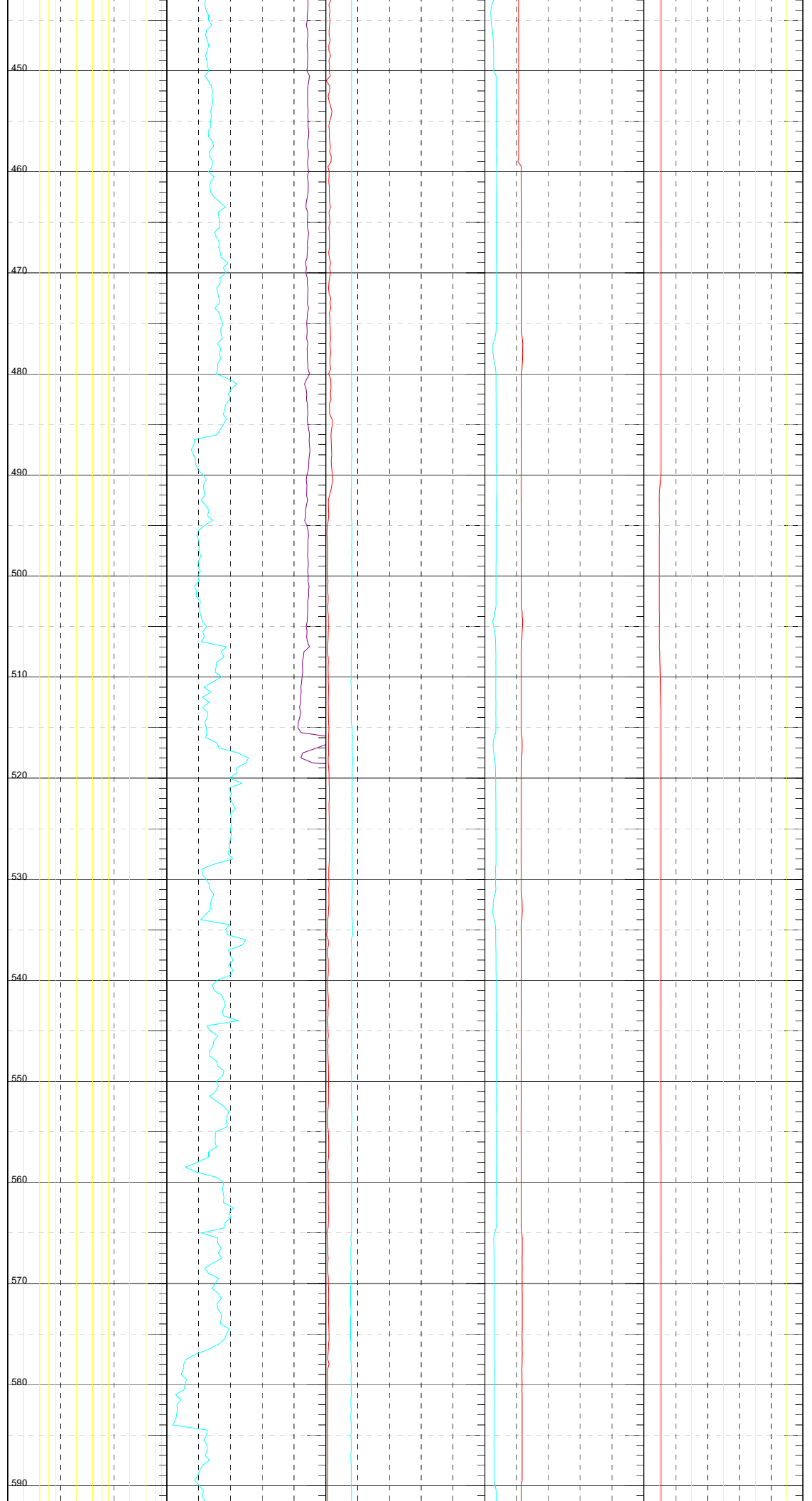
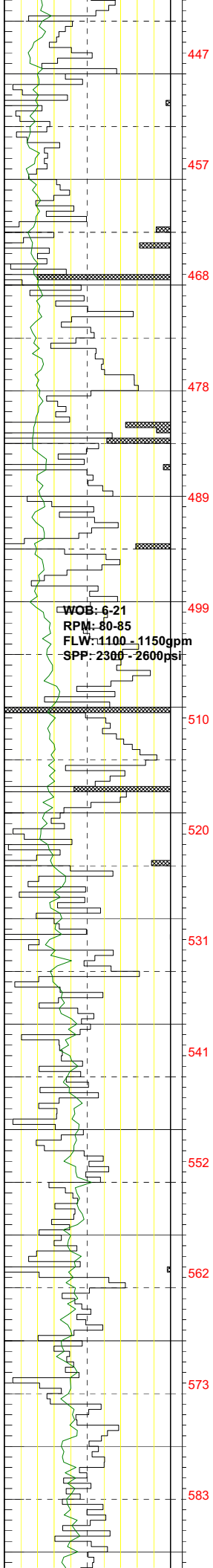
30" CONDUCTOR
SET @ 157.0m

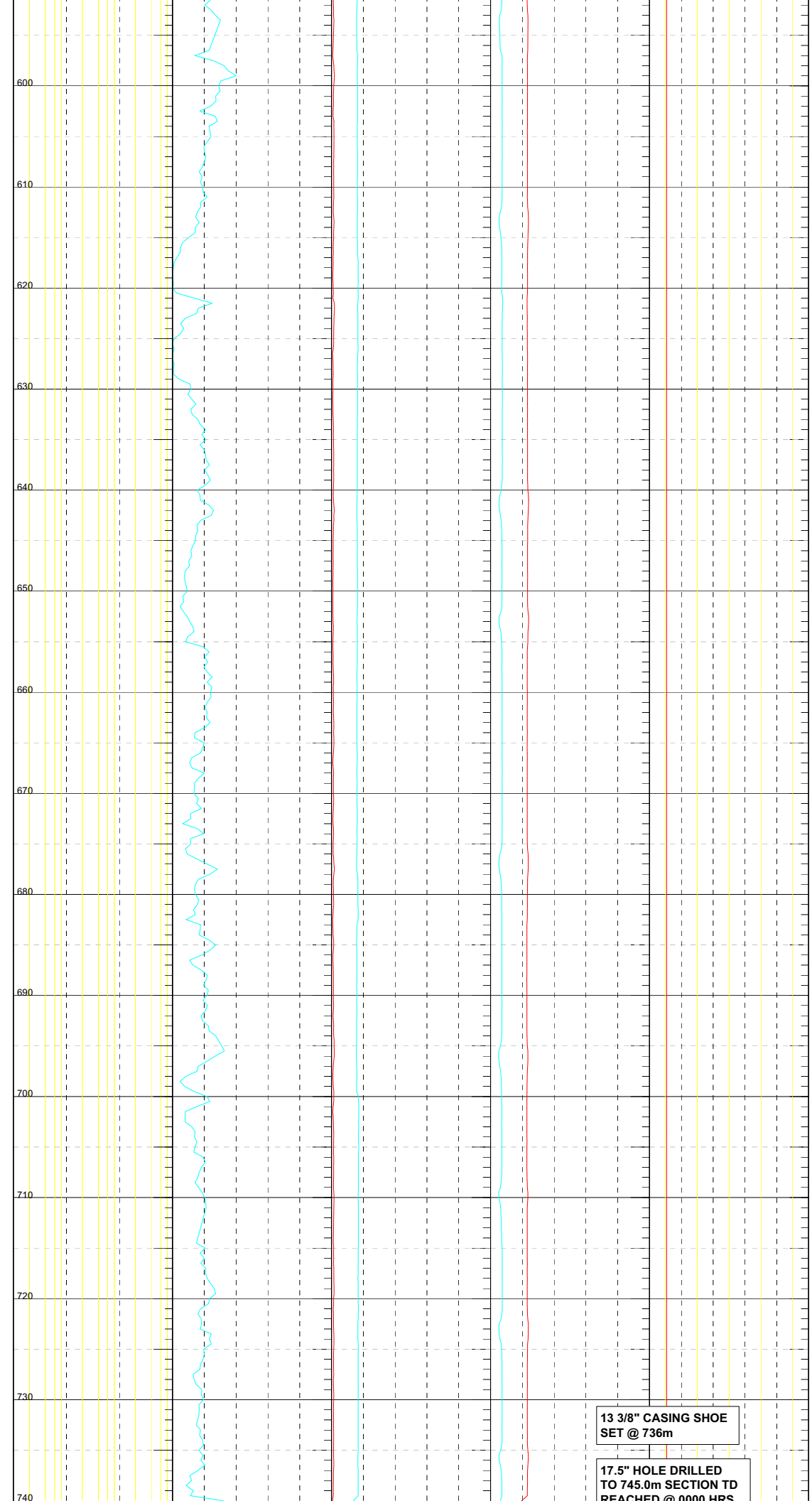
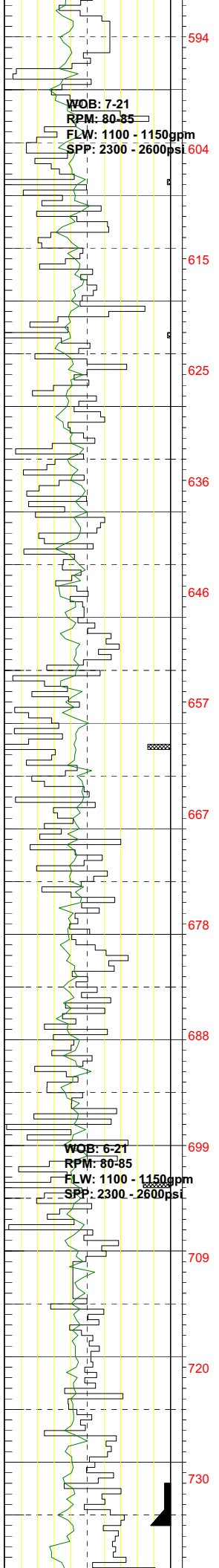
26" x 36" SURFACE HOLE
DRILLED TO 159.0m REACHED
SECTION TD @ 0430 HRS ON
24-12-2010

START 17.5" SECTION
@ 0400 HRS ON
25-12-2010









ON 26-12-2010 @ 0600 HRS

START 12.25" SECTION
ON 29-12-2010 @ 0600 HRS

LOT CONDUCTED @ 748m
14.9ppg EMW

26-12-2010

29-12-2010

BIT # 3: 311mm(12.25")
TYPE: REED HYCALOG
JETS 8 x 14
IN: 745-OUT: 1311
RUN: 566-HRS: 13.29
COND: 2-6 LT-N-X-I-CT-PR

WOB: 1 - 22
RPM: 44 - 81
FLW: 792 - 1008 gpm
SPP: 1350 - 2357 psi

741

751

761

772

782

793

803

814

824

835

845

856

867

877

750

760

770

780

790

800

810

820

830

840

850

860

870

880

